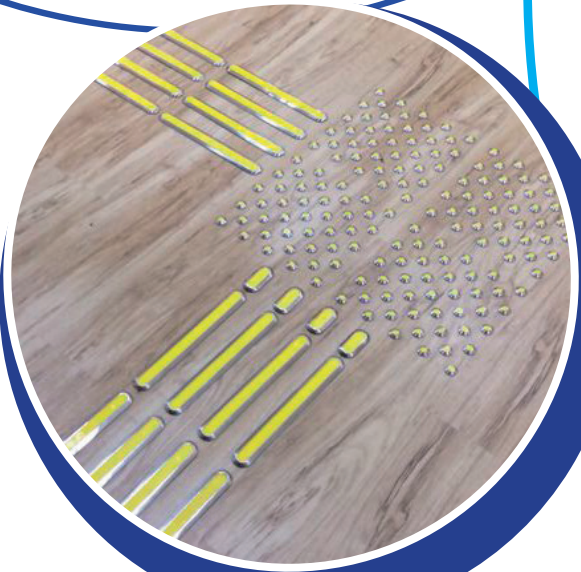


Your One-Stop Supplier for Tactile Ground Surface Indicators (TGSIs)

- Specialised in Supply and Installation of High Quality Stainless Steel Tactile for Tactile Guide Path
- Specialised in Supply of High Quality Homogeneous Tactile for BFA Projects
- Cost-Effective and Efficient Supply & Installation Package for Stainless Steel Tactile Stud
- Quick Installation Method and No Limitation on the Ground Flooring Substrate for Installation
- ONE-Single Piece Stainless Steel Tactile Stud with Anchoring Spigot - Strongly Fixed on the Ground Flooring Surface
- Specifications Fully Complied with Buildings Department "Design Manual: Barrier Free Access 2008"
- Already Installed in Many Government Buildings and Facilities.



UNICE Technology Limited
如懿科技有限公司

Address: 18/F., Malahon Centre, 10-12 Stanley Street,
Central, Hong Kong.

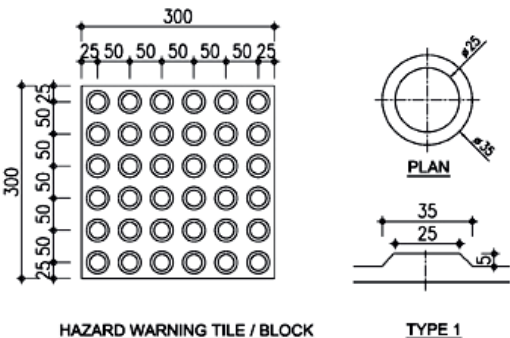
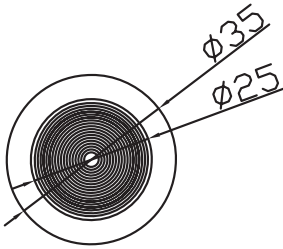
Tel: (852) 2575-8233 Fax: (852) 2575-8663

地址: 香港中環士丹利街10-12號萬利豐中心18樓

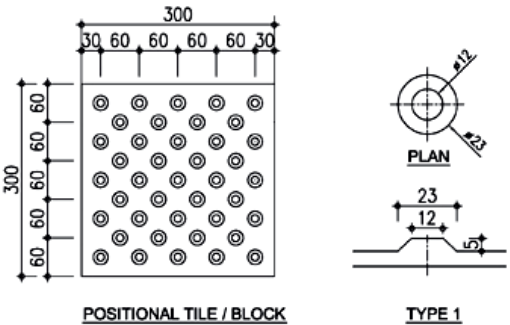
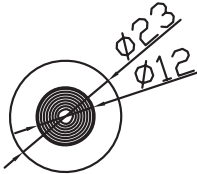
Email: chiu@unicetech.com

Tactile Ground Surface Indicators (TGSIs)

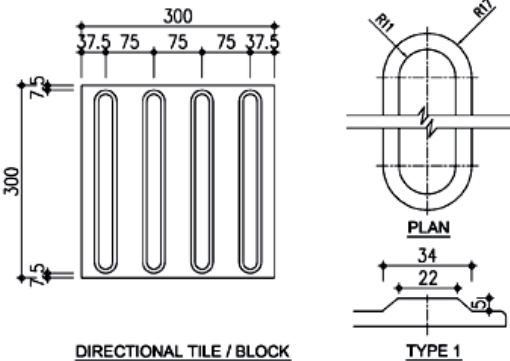
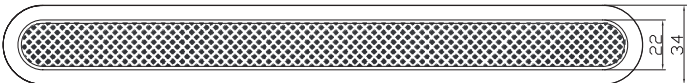
Hazard Warning Tile:

Ceramic Homogeneous Tactile	Stainless Steel Tactile Stud
 <p>HAZARD WARNING TILE / BLOCK</p> <p>TYPE 1</p>	 <p>(300x300mm Tactile consists of <u>36pcs</u> Studs)</p>

Positional Tile:

Ceramic Homogeneous Tactile	Stainless Steel Tactile Stud
 <p>POSITIONAL TILE / BLOCK</p> <p>TYPE 1</p>	 <p>(300x300mm Tactile consists of <u>41pcs</u> Studs)</p>

Directional Tile:

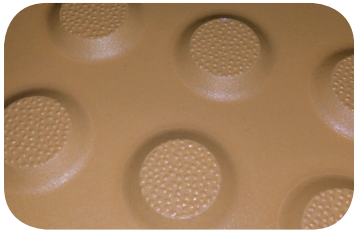
Ceramic Homogeneous Tactile	Stainless Steel Tactile Stud
 <p>DIRECTIONAL TILE / BLOCK</p> <p>TYPE 1</p>	 <p>(300x300mm Tactile consists of <u>4pcs</u> Studs)</p>

Sources: Buildings Department “Design Manual: Barrier Free Access 2008”

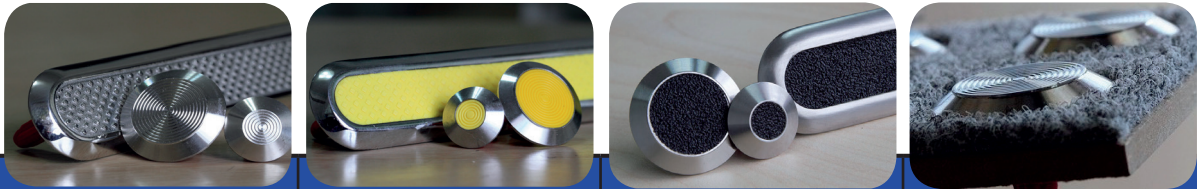
Ceramic Homogeneous Tactile Series:

Specifications:

1. Size: 300 mm x 300 mm x (10mm + 5mm)
2. Material: Homogeneous Ceramic
3. Surface: High Anti-Slip Finishing
4. Colour: Yellow / Black
5. Passed ASTM-C1028 Test for Static Coefficient of Friction:
 - Above 0.67 for Dry and Wet Conditions



Stainless Steel Tactile Studs Series:

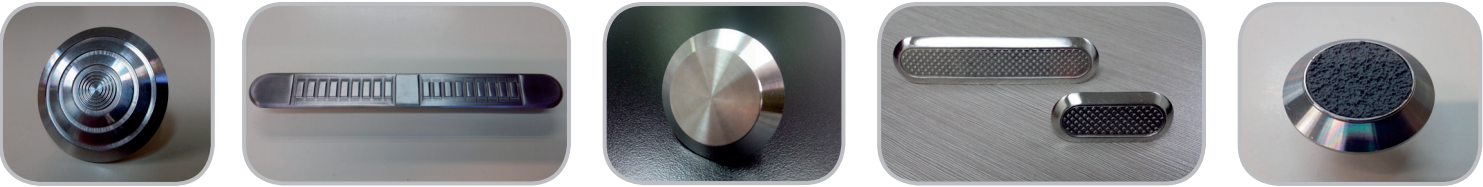


Features				
Series	Silver Series	Yellow In-Filled	3M Black In-Filled	Tactile ON-Carpet
Material	316 Stainless Steel	316 Stainless Steel	316 Stainless Steel	316 Stainless Steel
Surface (Hazard Warning & Positional Studs)	Anti-Slip Concentric Rings Finishing	Anti-Slip Concentric Rings Finishing	Anti-Slip Finishing	Anti-Slip Finishing
Surface (Directional Stud)	Anti-Slip Finishing	Anti-Slip Finishing	Anti-Slip Finishing	Anti-Slip Finishing
Shape	Truncated	Truncated	Truncated	Truncated
Specialty	ONE-Single Piece with Anchoring Spigot	ONE-Single Piece with Anchoring Spigot	ONE-Single Piece with Anchoring Spigot	ONE-Single Piece with Anchoring Spigot

Type	Size
Hazard Warning Stud	35mm (Diameter) x 5mm (Height)
Positional Stud	23mm (Diameter) x 5mm (Height)
Directional Stud	285mm (Long) x 34mm (Width) + 5mm (Height)

Specifications are fully complied with Buildings Department “Design Manual: Barrier Free Access 2008”

Other Optional Design:



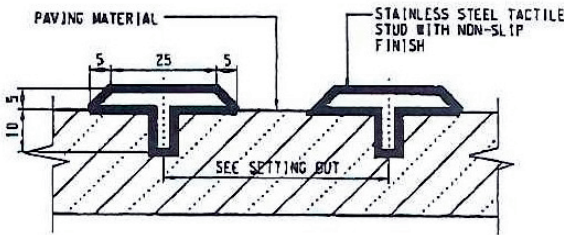
Installation Method:

Method:

Drill Hole and Make Good – As Simple As This!!

Highlights:

1. ONE-Single Piece Anchoring Spigot with All Fixing Components and Accessories
2. Strongly Fixed on Any Ground Flooring Surface and Substrate
3. Cost Effective and Efficient Installation Method (Short Installation Time)
4. Specially Design for Heavy Duties Traffics

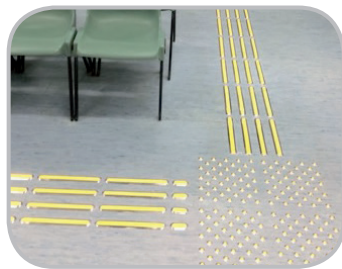


Installation Job References:

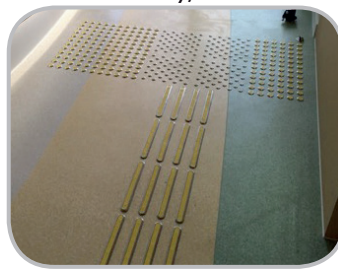
牛頭角彩德商場
Choi Tak Shopping Centre, Ngau Tau Kok
(New Re-Routing Works)



修頓中心2樓
2/F., Southorn Centre, Wan Chai



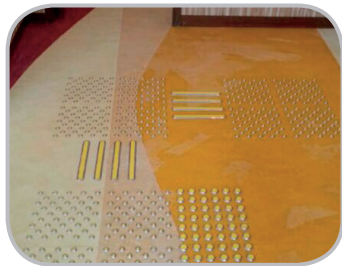
大埔復康老人中心
Fuk Hong Social Centre for
the Elderly, Tai Po



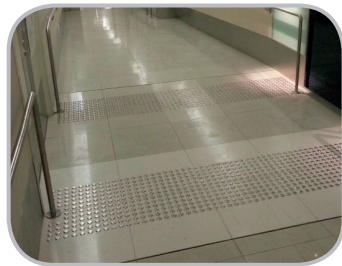
灣仔稅務大樓, 入境大樓
Revenue Tower, Wan Chai



新生精神康復會 - 東涌社區會堂
NLPRA Tung Chung Community Centre



保養維修 - 香港機場職員走廊通道
Maintenance Work -
HK Airport Staff Hall Passage



粉嶺健康中心
Fanling Health Centre



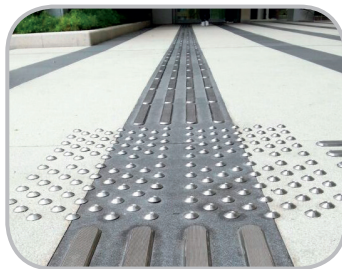
粉嶺法院:
Fanling Law Courts



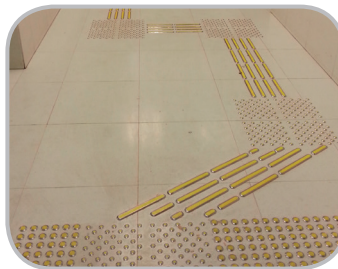
荃灣多層停車場
Tsuen Wan Multi-Storey Carpark



盛境居
Prosperity Villa



大埔綜合大樓
Tai Po Complex



廣福公園
Kwong Fook Park



Other Barrier Free Access Projects Installation References:

2014
修頓中心2樓
牛頭角彩德商場
大埔復康老人中心

2013
CCB Tower, Central
Hong Kong Polytechnic University
香港機場職員走廊通道
東涌社區會堂

2012
上環蘇豪快捷酒店
旺角政府合署
長沙灣政府合署 4-16/F
大埔社區中心
元朗政府合署

